



viflow

Portal > Knowledgebase > Manuals > Change to viflow 6 > Adaptation of the viflow 6 WebModel (KB10167)

Adaptation of the viflow 6 WebModel (KB10167)

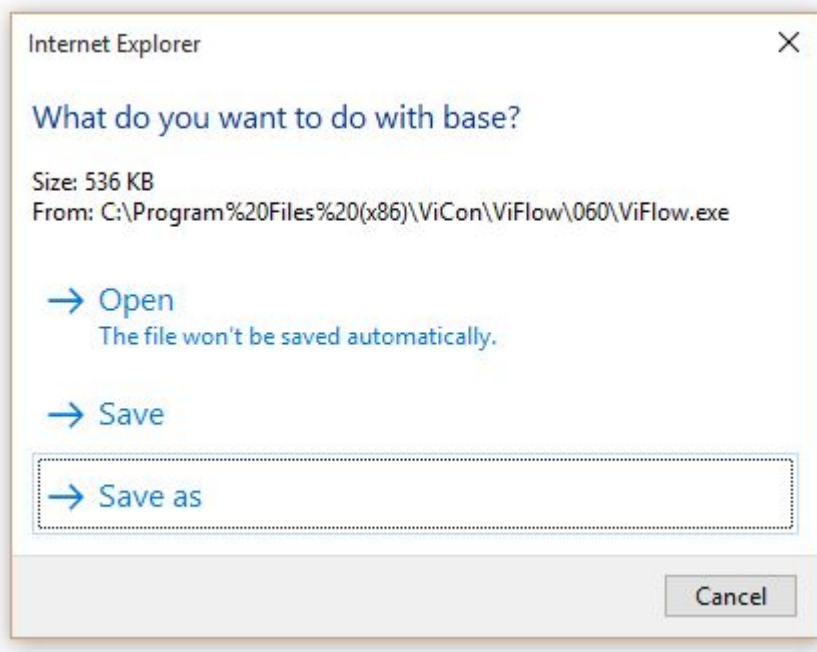
Sebastian Eich - 2021-06-07 - in Change to viflow 6

The following steps require administrator rights on the system.

Step 1:

Extract the basic parts of the viflow Webmodel as a zip file with the following run command:
res://C:\Program Files (x86)\ViCon\ViFlow\060\ViFlow.exe/webmodel/base

After running the command your WebBrowser will ask what to do with the "base" file.

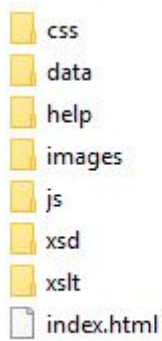


Save it and add .zip to the file name.

File name:	base.zip
Save as type:	All Files (*.*)

Schritt 2:

Extract the zip file to a new folder. In this folder you can change all settings of the WebModel and can also add new files to it.



To make changes in the design of the WebModel you can change all settings in the css files which can be found in the css folder.

Schritt 3:

Now you move your changed WebModel folder to the viflow program folder in order to make viflow use your changed WebModel for future Exports.

Create a new folder called WebApp_Customizations in the viflow program folder (normally C:\Program Files (x86)\ViCon\ViFlow\060).

Then move all changed files from the base folder to this new folder.

Schritt 4:

Start viflow and export your WebModel. All changed files from the WebApp folder will overwrite the default files of the WebModel.

Alternative possibility:

The changed files can also be transferred to the viflow directory via batch file. In the export settings of the WebModel a batch file can be specified, which is started directly after the export.

Tags

viflow 6

WebModel