



# viflow

Portal > Knowledgebase > Manuals > WebModel > How to configurate direct links to the viflow 6 WebModel (KB10330)

---

## How to configurate direct links to the viflow 6 WebModel (KB10330)

Sebastian Eich - 2020-01-03 - in WebModel

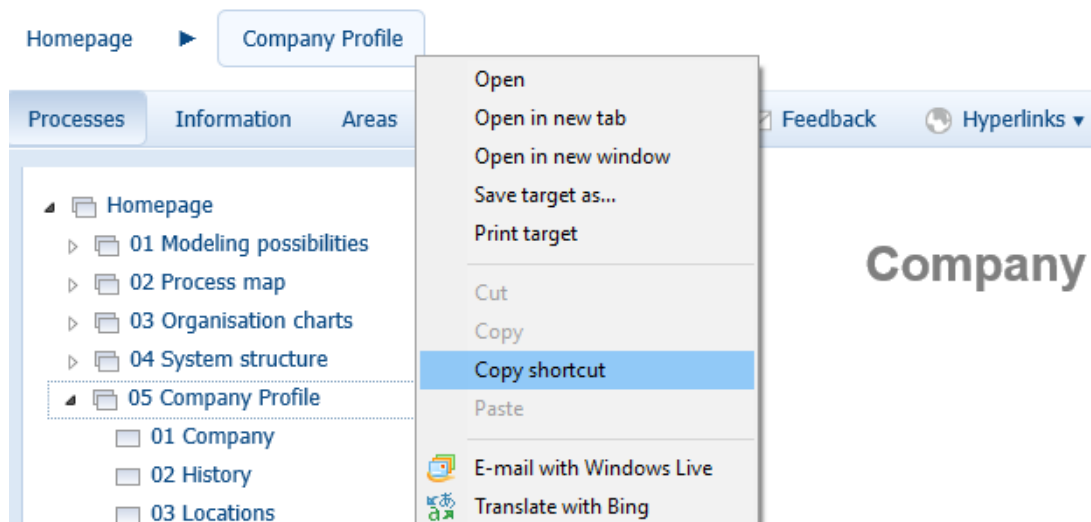
With the following parameters in this article, you can customize your link to the viflow 6 WebModel to jump to a single process and start automatically with a selected interface and content language. These links work only when the WebModel is placed on a Web server.

All parameters are separated with the character ?. They are written directly behind the link to the index.html file of the WebModel.

### **Link to a specific process in the WebModel**

The processid = X parameter links to the selected process where X is replaced by the process ID. The process ID you can easily see when exporting the processes from viflow to an Excel file. In the viflow "File" menu go to "Export" and select "Export Common viflow Objects"

Or copy the link (including processid parameters) from an open process in the WebModel via the breadcrumb navigation:



## Open the WebModel with a specific Content Language

The parameter `contentlanguage= A | 1 | 2 | 3 | ...` - opens the link with the selected content language. **A** stands for the current language that was activated in viflow at the time of the WebModel export. Please make sure that when, for example, Language 1 is the current language in viflow, the link cannot be set to language 1. It must then be linked to A. Note the capitalization, otherwise there may be problems in Internet Explorer.

## Open the WebModel with a specific Interface Language

The parameter `interfacelanguage=de|en|...` - opens the WebModel with the selected Interface Language.

## Combine multiple parameters

It is possible to combine parameters with **&** between them.

Here are some examples:

`..index.html?processid=294&contentlanguage=2` opens process 294 with the second Content Language.

`..index.html?contentlanguage=2&interfacelanguage=en&processid=5` opens process 5 with the second Content Language and with an English Interface.

## Open the properties of a specific viflow element

In order to link directly to the details page of a process, information or area, another parameter must be added to the link to index.html. This parameter is **?objectid=00**. The ID comes from our database and can be exported through viflow. Please see the first paragraph of this article for details. The parameter **?objectid=00** is followed by a second **&typeflag=X**.

Instead of X, the type of the selected object must be entered. p for process, i for information, and a for area.

Here is an example how to link directly to the details page of an viflow information:

C:\temp\webmodel\index.html?objectid=123&typeflag=i

### Special cases:

#### Location of the WebModel is local (drive or file server)

To call a local UNC path with additional parameters, it must start with file: ///.

So for example file:///C:\temp\WebModel\index.html?processid=123

#### When using the direct links in Microsoft Office products:

Due to an internal check of entered hyperlinks in Microsoft Office products, our direct links can only be used there if the WebModel is stored on a web server and is accessed via an http link. Once a UNC path to the WebModel is entered into Office, it filters out the additions and links to the Index.html file only.

#### Deleted processes can still be accessed via a direct link:

An explanation and solution to this case can be found in our article 10361.